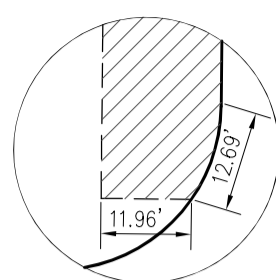
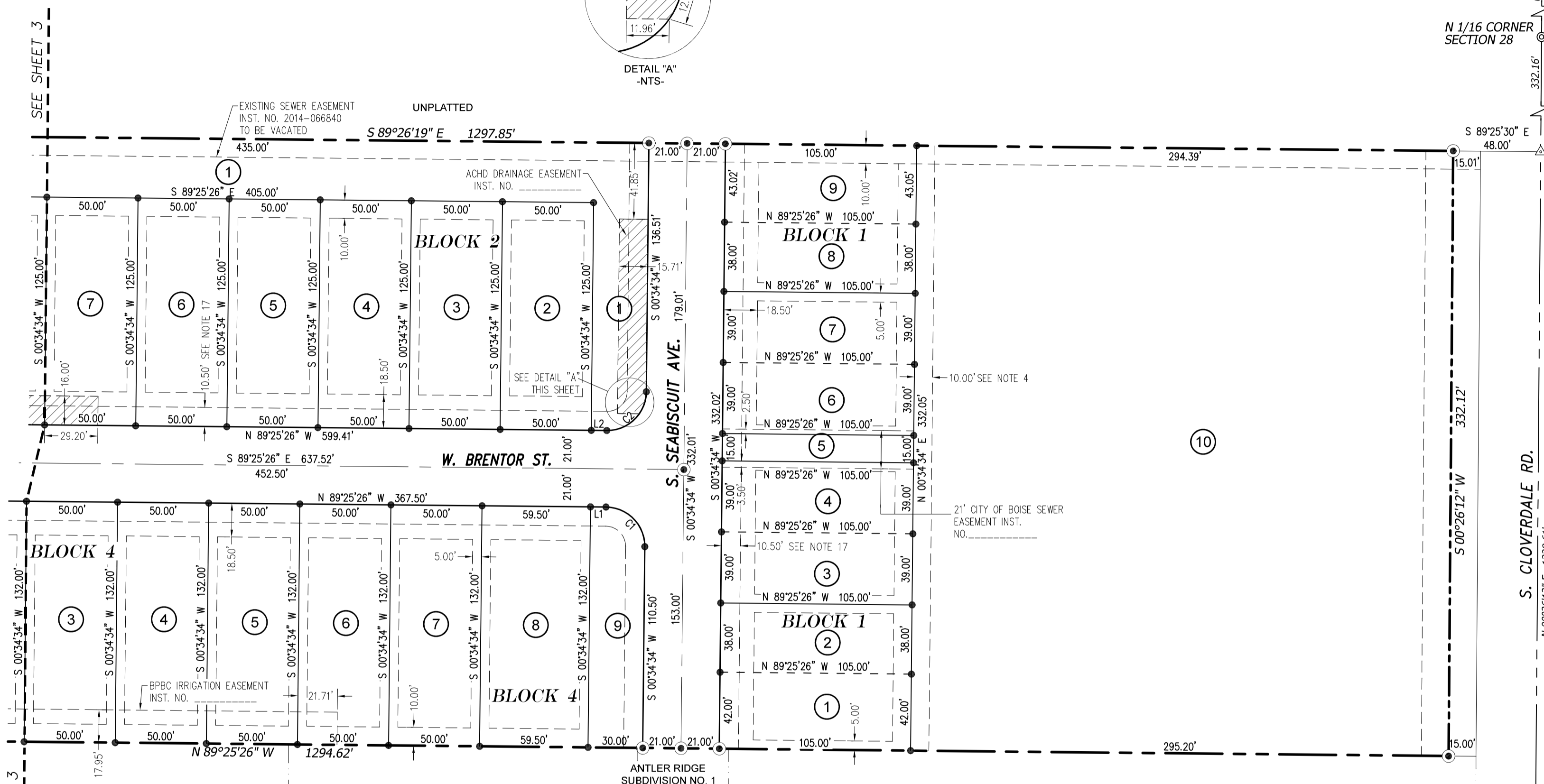


FINAL PLAT FOR CROSSWINDS SUBDIVISION

VICTORY RD. 21 22
28 27 BRASS CAP
C.P.&F. NO. 106193436



DETAIL "A"
-NTS-

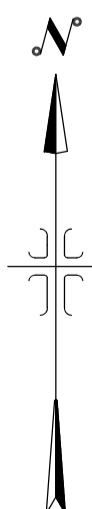


SEE SHEET 1 FOR NOTES
SEE SHEET 3 FOR LINE & CURVE TABLES

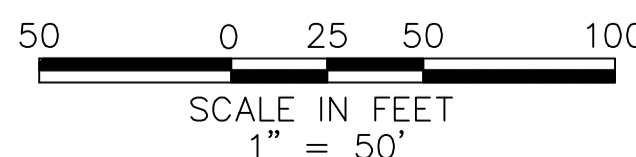
LEGEND

- BOUNDARY LINE
- LOT LINE
- CENTER LINE
- ZERO LOT LINES
- EASEMENT LINE
- SECTION LINE
- EXISTING PROPERTY LINE

- LOT NUMBER
- BLOCK 1** BLOCK NUMBER
- FOUND BRASS CAP MONUMENT
- FOUND 5/8" REBAR AS NOTED
- FOUND 1/2" REBAR AS NOTED
- SET 5/8" REBAR, PLS 14221
- SET 1/2" REBAR, PLS 14221
- CALCULATION POINT, NOTHING FOUND, NOTHING SET
- ACHD STORM DRAIN EASEMENT



E 1/4 CORNER
SECTION 28
C.P.&F. NO. 106043559



2030 S. WASHINGTON AVE.
EMMETT, ID 83617
(208) 398-8104
FAX (208) 398-8105

SAWTOOTH

Land Surveying, LLC
EMMETT, IDAHO

WWW.SAWTOOTHLS.COM

SHEET:	DATE:	DRAWN BY:	CHECKED BY:	JOB#:	DWG#:
2 OF 5	09/24/2019	RLC	CP	17192	17192-FP